

Accessory for Canon PowerShot G7 X/WP-DC54

INON INC. is pleased to announce new accessory and current product compatibility for Canon digital camera PowerShot G7 X/WP-DC54 (*1) to be released on February 6th, 2015.

- LD Lens Adapter Base DC54 (*2)(*3)
 - Release date: February 6th 2015
 - Retail in Japan: JPY10,500-
 - JAN code: 456212143 788 3



「LD Lens Adapter Base DC54」 on WP-DC54/PowerShot G7 X (left)

「LD Lens Adapter Base DC54」 (right)

(*1)

Contact Canon Inc. for detail of camera/waterproof case. INON Inc. confirms product compatibility based on a camera/housing available in Japan.

(*2)

When using the Lens Adapter Base DC54 attached on "WP-DC54/PowerShot G7 X" without any lens, the camera system will have buoyancy. Adjust total underwater weight by using other accessories to get slightly negative buoyancy to avoid accidental rapid ascent.

(*3)

Significant vignetting will be observed at zoom wide end even without an attachment lens. This will be eliminated by removing the LD Lens Adapter Unit from housing lens port.

■ Attachment Lens Compatibility with PowerShot G7 X/WP-DC54 (*1) ■

The 「LD Lens Adapter Base DC54」 enables you to install INON 『28LD Mount series』 attachment lens such as 「UWL-S100 ZM80」 wide conversion lens (*4)(*5)(*6) designed for wide digital camera having wider than 28mm master lens or super zoom function, to shoot wider area of maximum angle of view underwater 100° (air: 179.8°) and its super wide option 「Dome Lens Unit II for UWL-S100 ZM80」 (*4) to increase it up to 149.8°.

- ・ 「『UWL-S100 ZM80』 Wide Conversion Lens」 (*4)(*5)(*6)
 - Available in the market
 - Retail in Japan: JPY29,800-
 - JAN code : 456212143 705 0
- ・ 「Dome Lens Unit II for UWL-S100 ZM80」 (*4)
 - Available in the market
 - Retail in Japan: JPY14,000
 - JAN code : 456212143 708 1

The 『UCL-165LD』 close-up lens (*7) to shorten minimum shooting distance for macro imaging is also usable.

- ・ 「UCL-165LD Close-up Lens」 (*7)
 - Available in the market
 - Retail in Japan: JPY15,000
 - JAN code : 456212143 630 5



「UWL-S100 ZM80」 attached on WP-DC54/PowerShot G7 X (upper left)

「Dome Lens Unit II for UWL-S100 ZM80」 attached on WP-DC54/PowerShot G7 X (upper right)

「UCL-165LD」 attached on WP-DC54/PowerShot G7 X (lower left)

INON supports to shoot all different type of subject from “semi fish-eye” to “ultra macro” imaging with simple yet reliable system to deliver high quality imagery.

- (*4) Use smaller aperture setting for optimum optical performance, since combined camera is required set to focal length approx.80mm (35mm film equivalent) making image quality degrade on peripheral part with wider aperture setting.
- (*5) Optional 『M52-LD Mount Converter for UWL-S100 ZM80』 is required.
- (*6) Zoom in until no vignetting is observed for both on land and underwater use. This product is designed to bring out underwater angle of view 100° (air: 179.8°) when camera zoom position is set to about 80mm (35mm film equivalent).
- (*7) Using both on land and underwater from zoom wide end to middle range will have vignetting. Zoom towards telephoto side until no vignetting is observed.

■ Strobe/LED flashlight Compatibility with PowerShot G7 X/WP-DC54 (*1) ■

The highly accurate “S-TTL” Auto mode of INON 「Z-240」 / 「D-2000」 / 「S-2000」 is supported when connecting via INON “Optical D Cable Type L” products below.

- 「Optical D Cable Type L/Double Hole Rubber Bush Set」
--Available in the market
--Retail in Japan: JPY6,360-
--JAN code: 456212143 561 2
- 「Optical D Cable L Type L/Double Hole Rubber Bush Set」
--Available in the market
--Retail in Japan: JPY6,660-
--JAN code: 456212143 562 9
- 「Optical D Cable SS Type L/Double Hole Rubber Bush Set」
--Available in the market
-- Retail in Japan: JPY5,360-
--JAN code: 456212143 563 6
- 「Optical D Cable LL Type L/Double Hole Rubber Bush Set」
--Available in the market
-- Retail in Japan: JPY7,160-
--JAN code: 456212143 564 3
- 「Rubber Bush Type L」
-- Available in the market
-- Retail in Japan: JPY700-
--JAN code: 456212143 784 5



INON Rubber Bush Type L is directly plugged in the fiber optics adapter/built-in flash shade of the WP-DC54.

- 「S-2000」 (*8)
--Available in the market
--Retail in Japan: JPY38,000-
--JAN code: 456212143 417 2
- 「D-2000 Type4 」 (*8)
--Available in the market
--Retail in Japan: JPY49,800
--Jan Code: 456212143 211 6
- 「Z-240 Type4 」 (*8)
--Available in the market
--Retail in Japan: JPY60,800
--JAN code: 456212143 251 2

INON LED flashlight 「LF2700-W」 / 「LF800-N」 / 「LF1100-W」 / 「LF1400-S」 / 「LF1000-S」 / 「LE700-W」 / 「LE700-S」 / 「LE350」 are usable to benefit various imaging expressions such as underwater full HD movie function of 『PowerShot G7 X』

- ・ 「LF2700-W」
 - Available in the market
 - Retail in Japan: JPY 32,800-
 - JAN code: 456212143 783 8

- ・ 「LF800-N」
 - Available in the market
 - Retail in Japan: JPY27,800-
 - JAN code: 456212143 779 1

- ・ 「LF1100-W」
 - Available in the market
 - Retail in Japan: JPY 26,800-
 - JAN code: 456212143 765 4

- ・ 「LF1400-S」
 - Available in the market
 - Retail in Japan: JPY 28,800-
 - JAN code: 456212143 766 1

- ・ 「LF1000-S」
 - Available in the market
 - Retail in Japan: JPY 26,800-
 - J JAN code: 456212143 764 7

- ・ 「LE700-W」
 - Available in the market
 - Retail in Japan: JPY 16,800-
 - JAN code: 456212143 712 8

- ・ 「LE700-S」
 - Available in the market
 - Retail in Japan: JPY 16,800-
 - JAN code: 456212143 711 1

- ・ 「LE350」
 - Available in the market
 - Retail in Japan: JPY 12,800-
 - JAN code: 456212143 742 5

(*8)
"S-TTL" Auto mode is not usable when shooting mode of the built-in flash is set to manual.

■ Arm System Compatibility with PowerShot G7 X/WP-DC54(*1) ■

The 「Grip Base D4」 which is equipped with “SPS(Slide Plate System)” to support more than 100 different underwater housings and directly attached on a compatible housing, is usable. Wide variety of INON adapters/bases is compatible and easy to set-up multiple lighting system with dual strobe configuration by attaching extra 「D Holder」

The compact light arm 「Shoe Base」 (*9) (*10) is directly attached on the housing accessory shoe.

- ・ 「Grip Base D4」
 - Available in the market
 - Retail in Japan: JPY8,000-
 - JAN code: 456212143 430 1
- ・ 「Shoe Base」 (*9)(*10)
 - Available in the market
 - Retail in Japan: JPY3,500-
 - JAN code: 456212143 356 4

(*9)

Optional “Accessory Shoe Spacer for Canon” is required to use the Shoe Base. The spacer comes with the Shoe Base from October 25th, 2012 shipping.



「Shoe Base」 and 「Accessory Shoe Spacer」 for Canon

(*10)

When the strobe is attached via 「Shoe Base」 on PowerShot G7 X/WP-DC54, the camera system will have buoyancy. Adjust total underwater weight by using other accessories to get slightly negative buoyancy to avoid accidental rapid ascent.

■ PowerShot G7 X/WP-DC54 (*1) Combination Example ■



- ・ Canon PowerShot 「G7 X」 + 「WP-DC54」
- ・ 「LD Lens Adapter Base DC54」
- ・ 「UCL-165LD」
- ・ 「LF1100-W」
- ・ 「Single Light Holder LF」
- ・ 「Shoe Base」

INON

The home of ultimate underwater imaging gear

www.inon.jp



- Canon 「PowerShot G7 X」 + 「WP-DC54」
- 「LD Lens Adapter Base DC54」
- 「UCL-165LD」
- 「S-2000」 (with packaged “-0.5 White Diffuser for S-2000”)
- 「Optical D Cable SS Type L/Double Hole Rubber Bush Set」
- 「Shoe Base Set」

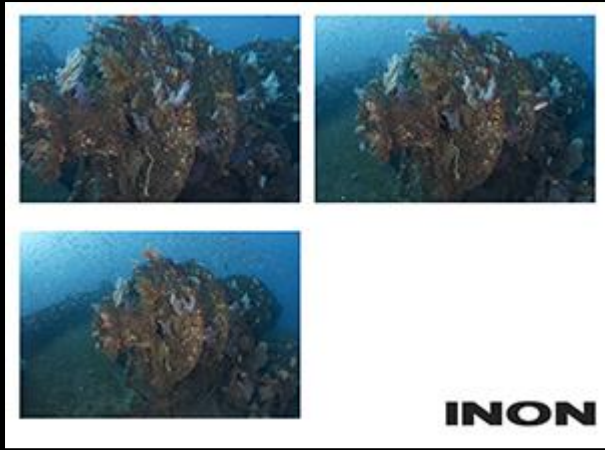


- Canon 「PowerShot G7 X」 + 「WP-DC54」
- 「LD Lens Adapter Base DC54」
- 「UWL-S100 ZM80」
- 「M52-LD Mount Converter for UWL-S100 ZM80」
- 「S-2000」 (with packaged “-0.5 White Diffuser for S-2000”)
- 「Optical D Cable Type L/Double Hole Rubber Bush Set」
- 「LF800-N」
- 「Condenser Lens LF-N」 (with packaged “Blue Filter LF-N”)
- 「Strobe Light Holder LF」
- 「Z Joint」
- 「Grip Base D4」
- 「Stick Arm S Set YS-MV」
- 「M5 Joint」
- 「LD Lens Holder for Float Arm」
- 「UCL-165LD」



- Canon 「PowerShot G7 X」 + 「WP-DC54」
- LD Lens Adapter Base DC54」
- 「Dome Lens Unit II for UWL-S100 ZM80」
- 「UWL-S100 ZM80」
- 「M52-LD Mount Converter for UWL-S100 ZM80」
- 「Z-240 x 2」
- 「-0.5 (4900K) Diffuser 2 (TTL/Manual) (with packaged “W40° Filter LE”）」
- 「-0.5 (4900K) Diffuser 2 (TTL/Manual) (with packaged “Red Filter LE”）」
- 「Optical D Cable L Type L/Double Hole Rubber Bush Set」
- 「Optical D Cable L Type L」
- 「Grip Base D4」
- 「D Holder」
- 「Z Adapter II x 2」
- 「Float Arm M x 2」
- 「Clamp III x 4」
- 「Z Adapter MV x 2」
- 「LD Lens Holder for Float Arm」
- 「UCL-165LD」
- 「LF2700-W (with packaged “Wide Filter LF-W”）」
- 「Single Light Holder LF」
- 「Shoe Base」

■ 『PowerShot G7 X』 / 『WP-DC54』 sample image ■



- Subject/shooting distance:
Winch on the wreck/approx. 1.5m (4.9ft)
- Equipment:
Canon PowerShot G7 X/WP-DC54, Z-240 Strobe x 2,
-0.5 (4900K) Diffuser 2 (TTL/Manual)
- Photo data:
Aperture Priority, Z-240 (Manual), F11, ISO640
 - Without wide conversion lens (upper left)
Zoom wide end 8.8mm (24mm at 35mm film equivalent), 1/20
 - With UWL-S100 ZM80 (upper right)
Zoom telephoto side 31.0mm (85mm at 35mm film equivalent), 1/25
 - With Dome Lens Unit II for UWL-S100 ZM80 (lower left)
Zoom telephoto side 31.0mm (85mm at 35mm film equivalent), 1/30
- Photo by:
R. Hattori(INON INC.) at "Wreck", Atami, Shizuoka, Japan



- Subject/shooting distance:
"Wreck"/approx.3m (9.8ft)
- Equipment:
Canon PowerShot G7 X/WP-DC54,
UWL-S100 ZM80 + Dome Lens unit II for UWL-S100 ZM80
- Photo data:
Aperture Priority, zoom telephoto side 31.0mm (85mm at 35mm film equivalent), 1/15, F11, ISO400
- Photo by:
R. Hattori (INON INC.) at "Wreck" point, Atami, Shizuoka, Japan



- Subject/shooting distance:
Paddle weed/approx.10cm (3.9in)
- Equipment:
Canon PowerShot G7 X/WP-DC54, Z-240 Strobe x 2,
-0.5(4900K)Diffuser2(TTL/Manual), UWL-S100 ZM80 +
Dome Lens Unit II for UWL-S100 ZM80
- Photo data:
Manual mode, Z-240 (Manual), Zoom telephoto side 31.0mm
(85mm at 35mm film equivalent), 1/320, F8.0, ISO400
- Photo by:
R. Hattori (INON INC.) at Hayama, Kanagawa, Japan



- Subject/shooting distance:
Painted frogfish/approx.10cm (3.9in)
- Equipment:
Canon PowerShot G7 X/WP-DC54, LE800-N,
Condenser Lens LF-N x 2, UCL-165LD + UCL-165M67
- Photo data:
Aperture Priority (AF frame-linked spot metering),
LE800-N (Full), Zoom telephoto end 36.8mm (100mm at
35mm film equivalent), 1/1600, F8.0, ISO200
- Photo by:
R. Hattori (INON INC.) at "Wannai", Osezaki, Shizuoka, Japan



- Subject/shooting distance:
Thecacera pacifica/approx.10cm (3.9in)
- Equipment:
Canon PowerShot G7 X/WP-DC54, LE800-N,
Condenser Lens LF-N x 2, UCL-165LD + UCL-165M67
- Photo data:
Aperture Priority (AF frame-linked spot metering),
LE800-N (Full), Zoom telephoto end 36.8mm (100mm at
35mm film equivalent), 1/2000, F8.0, ISO200
- Photo by: R. Hattori (INON INC.) at "Wannai", Osezaki,
Shizuoka, Japan



- Subject/shooting distance:
Mantis shrimp/ approx.10cm (3.9in)
- Equipment:
Canon PowerShot G7 X/WP-DC54, S-2000 x 2, UCL-165LD
+ UCL-165M67
- Photo data:
Aperture Priority, S-2000: S-TTL Auto, Zoom telephoto
end 36.8mm(100mm at 35mm film equivalent), 1/100,
F11.0, ISO250
- Photo by:
R. Hattori (INON INC.) at "Yokoiso beach", Atami,
Shizuoka, Japan

■ Relative Information on INON Website ■

- ・「『UWL-S100 ZM80』 Wide Conversion Lens」
<http://www.inon.jp/products/lens/uwls100zm80/top.html>
- ・「『Dome Lens Unit II for UWL-S100 ZM80』」
http://www.inon.jp/products/lens/domelensunit2_uwls100/top.html
- ・「『UCL-165LD』 Close-up Lens」
<http://www.inon.jp/products/lens/ucl165ld/top.html>
- ・「Underwater “S-TTL” auto strobe 『S-2000』」
<http://www.inon.jp/products/strobe/s2000/top.html>
- ・「Underwater “S-TTL” auto strobe 『D-2000』」
<http://www.inon.jp/products/strobe/d2000/top.html>
- ・「Underwater “S-TTL” auto strobe 『Z-240』」
<http://www.inon.jp/products/strobe/z240/top.html>
- ・「Optical D Cable Type L/Double Hole Rubber Bush Set」
- ・「Optical D Cable SS Type L/Double Hole Rubber Bush Set」
<http://www.inon.jp/products/strobe/optical/capset.html>
- ・「Underwater LED flashlight 『LF2700-W』」
- ・「Waterproof LED flashlight 『LF800-N』」
- ・「Waterproof LED flashlight 『LF1100-W』」
- ・「Underwater LED flashlight 『LF1400-S』」
- ・「Waterproof LED flashlight 『LE1000-S』」
- ・「Underwater LED flashlight 『LE700-W』」
- ・「Underwater LED flashlight 『LE700-S』」
- ・「Waterproof LED flashlight 『LE350』」
http://www.inon.jp/products/le_light/lineup.html
- ・「Grip Base D4」
<http://www.inon.jp/products/armsystem/base.html#gripbase>
- ・「Shoe Base」
<http://www.inon.jp/products/armsystem/base.html#shoebase>

January 29th, 2015

INON INC.

*Press release information is as of January 29th, 2015 and subject to change without prior notice.

INON

The home of ultimate underwater imaging gear

www.inon.jp