

Compatibility with Nikon 1 J4/WP-N3

INON INC. is pleased to announce compatibility of existing INON products with Nikon lens interchangeable advanced camera system 『Nikon 1 J4』/『WP-N3』(*1).

■ External Strobe/LED flashlight with Nikon 1 J4/WP-N3 (*1) ■

The highly accurate “S-TTL Auto” mode of INON 『Z-240』/『D-2000』/『S-2000』 is supported when connecting via INON Optical D Cable Type L products below (*2)(*3).

- ・『Optical D Cable Type L』
--Available in the market
--Retail in Japan : JPY6,200-
--JAN code : 456212143 441 7
- ・『Optical D Cable L Type L』
--Available in the market
--Retail in Japan : JPY6,500-
--JAN code : 456212143 442 4
- ・『Optical D Cable SS Type L』
--Available in the market
--Retail in Japan : JPY5,200-
--JAN code : 456212143 443 1
- ・『Optical D Cable LL Type L』
--Available in the market
--Retail in Japan : JPY7,000-
--JAN code : 456212143 444 8



Optical D Cable Type L installed on the housing at its original “Fiber-optic cable socket cap”

Usable External Strobe

・「S-2000」

--Available in the market
--Retail in Japan : JPY38,000-
--JAN code: 456212143 417 2

・「D-2000 Type4」

--Available in the market
--Retail in Japan : JPY49,800-
--Jan Code: 456212143 211 6

・「Z-240 Type4」

--Available in the market
--Retail in Japan : JPY60,800-
--JAN code: 456212143 251 2

INON LED flashlight 「LF1100-W」/「LF1400-S」/「LF1000-S」/「LE700-W」/「LE700-S」/「LE350」 is also usable to reproduce vivid subject color even shooting 「continuous mode at 20fps」 or benefit fast and accurate focusing by「Advanced hybrid AF System」 of Nikon 1 J4 when shooting movie.

・「LF1100-W」

--Release date : October 23rd, 2014
--Retail in Japan : JPY26,800-
--JAN code: 456212143 765 4

・「LF1400-S」

--Available in the market
--Retail in Japan : JPY28,800-
--JAN code: 456212143 766 1

・「LF1000-S」

--Available in the market
--Retail in Japan : JPY26,800-
--JAN code: 456212143 764 7

・「LE700-W」

--Available in the market
--Retail in Japan : JPY16,800-
--JAN code: 456212143 712 8

・「LE700-S」

--Available in the market
--Retail in Japan : JPY16,800-
--JAN code: 456212143 711 1

・「LE350」

--Available in the market
--Retail in Japan : JPY12,800-
--JAN code: 456212143 742 5

(*1)

Contact Nikon Corporation for detail of camera/waterproof case. INON Inc. confirms product compatibility based on a camera/waterproof case available in Japan.

(*2)

The Nikon 「WP-N3」 has fiber optics adapter for underwater use and above listed INON fiber optics product is directly plugged in the adapter.

(*3)

To use “S-TTL Auto”, choose **【TTL】** at [flash control mode] and **【enable】** [underwater flash] in the shooting menu of the 『Nikon 1 J4』. “S-TTL Auto” is not useable when flash control is set to **【Manual】** and S-TTL Auto accuracy may degrade when **【enable】** [underwater flash] is not selected.

INON

The home of ultimate underwater imaging gear

www.inon.jp

■ Lens System Compatibility with Nikon 1 J4/WP-N3 (*1) ■

The Nikon 「WP-N3」 has 67mm screw mount on its lens port and below listed INON attachment lenses are usable without any lens adapter.

For wide imaging, INON 「UWL-H100 28M67 Type2」 (*4) is compatible and its super dome option 「Dome Lens Unit II for UWL-H100」(*5) further increases view angle for 『semi-fisheye imaging』.

・「UWL-H100 28M67 Type2」 Wide Conversion Lens (*4)

- Available in the market
- Retail in Japan : JPY38,000-
- JAN code : 456212143 633 6

・「Dome Lens Unit II for UWL-H100」(*5)

- Available in the market
- Retail in Japan : JPY32,600-
- JAN code : 456212143 620 6



「UWL-H100 28M67 Type2」 attached on Nikon 1 J4/WP-N3 (left)

「UWL-H100 28M67 Type2」 + 「Dome Lens Unit II for UWL-H100」 attached on Nikon 1 J4/WP-N3 (right)

For macro shooting, standard「UCL-330」(*6) and high power「UCL-165M67」 are compatible. When using 「1 NIKKOR 11-27.5mm F/3.5-5.6」 lens,「UCL-100 M67」(*7) is usable for super macro imaging.

・「UCL-100M67」 Close-up Lens (*7)

- Available in the market
- Retail in Japan : JPY26,000-
- JAN code : 456212143 710 4

・「UCL-165M67」 Close-up Lens (*6)

- Available in the market
- Retail in Japan : JPY13,000-
- JAN code : 456212143 162 1

・「UCL-330」 Close-up Lens (*6)

- Available in the market
- Retail in Japan : JPY13,000-
- JAN code : 456212143 156 0



「UCL-330」 attached on Nikon 1 J4/WP-N3 (left)

「UCL-165M67」 attached on Nikon 1 J4/WP-N3 (center)

「UCL-100M67」 attached on Nikon 1 J4/WP-N3 (right)

Also INON “underwater micro fisheye lens” 「UFL-M150 ZM80」 is compatible to capture underwater world through a view of a tiny fish to create unique image only by this lens.

・「UFL-M150 ZM80」 Underwater Micro Fisheye Lens(*8)(*9)

--Available in the market

--Retail in Japan : JPY23,000

--JAN code : 456212143 621 3



「UFL-M150 ZM80」 attached on Nikon 1 J4/WP-N3

(*4) Using on land with zoom wide end will have vignetting on image corners. Crop an image after shooting or slightly zoom to telephoto side.

(*5) Slight vignetting will be observed even underwater at zoom wide end. Crop an image after shooting or slightly zoom to telephoto side.

(*6) Only usable underwater with zoom setting from middle to telephoto side. Using on land or zoom wide side setting underwater will have vignetting.

(*7) Only compatible with 「1 NIKKOR 11-27.5mm f/3.5-5.6」lens.
Not compatible with 「1 NIKKOR VR 10-30mm f/3.5-5.6 PD-ZOOM」 lens.

(*8) Only compatible with 「1 NIKKOR VR10-30mm f/3.5-5.6 PD-ZOOM」lens.
Not compatible with 「1 NIKKOR 11-27.5mm f/3.5-5.6」lens.

(*9) Optional 「M27-M67 Mount Converter for UFL-M150 ZM80」 is required.

■ Arm System Compatibility with Nikon 1 J4/WP-N3 (*1) ■

The 「Grip Base M1」 is a base arm specifically designed for midsize underwater housing like an advanced camera with interchangeable lens and confirmed compatible with Nikon WP-N3. Wide variety of INON adapters/bases is compatible with the 「Grip Base M1」 and easy to set-up multiple lighting system with dual strobe configuration by attaching extra 「D Holder」. The compact light arm「Shoe Base」is directly attached on the housing accessory shoe.

・「Grip Base M1」

--Available in the market

--Retail in Japan : JPY12,000

--JAN code : 456212143 605 3

・「D Holder」

--Available in the market

--Retail in Japan : JPY4,000

--JAN code : 456212143 431 8

・「Shoe Base」

--Available in the market

--Retail in Japan : JPY3,500

--JAN code : 456212143 356 4

■ Nikon 1 J4/WP-N3 set-up example ■



- Nikon「Nikon 1 J4」 + Nikon 「WP-N3」
- 「UCL-165M67」
- 「LF1000-S」
- 「Single Light Holder LF」
- 「Shoe Base」

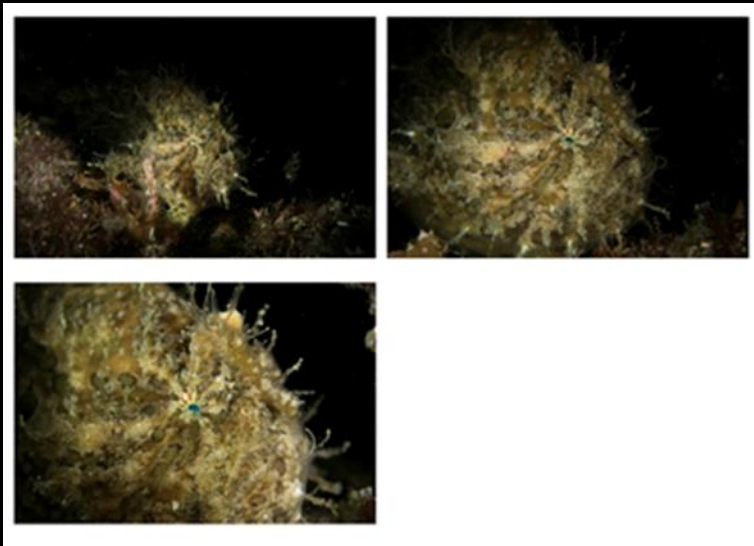


- Nikon「Nikon 1 J4」 + Nikon 「WP-N3」
- 「D-2000」
- 「-0.5 White Diffuser 2 (External Auto)」 (with packaged “Red Filter LE”)
- 「Optical D Cable Type L」
- 「LF1100-W」 (with packaged “Wide Filter LF-W”)
- 「Strobe Light Holder LF」
- 「Z Joint」
- 「Stick Arm S Set YS-MV」
- 「M5 Joint」
- 「M67 Lens Holder S」
- 「UCL-165M67」
- 「Grip Base M1」
- 「UWL-H100 28M67 Type2」
- 「Lens Hood II for UWL-H100」



- Nikon 「Nikon 1 J4」 + Nikon 「WP-N3」
- 「S-2000」 (with packaged “-0.5 White Diffuser for S-2000”) x 2
- 「Optical D Cable Type L」 x 2
- 「Grip Base M1」
- 「D Holder」
- 「Direct Base III」 x 2
- 「Clamp III」x 4
- 「Float Arm S」 x 2
- 「M67 Lens Holder for Float Arm」
- 「UCL-100M67」
- 「Z Adapter MV」 x 2
- 「LF1100-W」 (with packaged “Wide Filter LF-W”)
- 「Single Light Holder LF」
- 「Shoe Base」
- 「UWL-H100 28M67 Type 2」
- 「Dome Lens Unit II for UWL-H100」

■ Nikon 1 J4/WP-N3 sample images ■



- Subject: Frogfish
--Equipment: Nikon 1 J4 +1 NIKKOR 11-27.5mm F/3.5-5.6, LF1000-S x 2
--Photo data: Zoom telephoto end (27.5mm), ISO400, LF100-S at 「FULL mode」
• Without close-up lens (upper left)
1/500, F5.6, shooting distance approx. 20cm/8in
• With UCL-165M67 (upper right)
1/1600, F5.6, shooting distance approx.10cm/4in
• With UCL-100M67 (lower left)
1/1600, F5.6, shooting distance approx. 8cm/3in
--Photo by R. Hattori (INON INC.) at "Wannai" Osezaki, Shizuoka, Japan



- Subject/shooting distance: Frogfish/approx. 10cm (4in)
--Equipment: Nikon 1 J4 +1 NIKKOR VR10-30mm f/3.5-5.6 PD-ZOOM 6, LF1000-S x 2, UCL-165M67
--Photo data: Zoom telephoto end (30mm), 1/1250, F5.6, ISO400, LF1000-S at 「FULL mode」
--Photo by R. Hattori (INON INC.) at "Wannai" Osezaki, Shizuoka, Japan



--Subject/shooting distance : Common octopus/approx. 10cm (4in)
--Equipment: Nikon 1 J4 +1 NIKKOR VR10-30mm f/3.5-5.6 PD-ZOOM,
LF1000-S x 2, UCL-165M67
--Photo data: Zoom telephoto end (30mm), 1/1250, F5.6, ISO200, LF-1000S at 「FULL」 mode
--Photo by R. Hattori (INON INC.) at "Wannai" Osezaki, Shizuoka, Japan



--Subject/shooting distance : Frogfish/approx. 10cm (4in)
--Equipment: Nikon 1 J4, +1 NIKKOR 11-27.5mm F/3.5-5.6, LF1000-S x 2, UCL-165M67
--Photo data: Zoom telephoto end (30mm), 1/2000, F4.5, ISO400, LF1000-S at 「FULL」 mode
--Photo by R. Hattori (INON INC.) at "Wannai" Osezaki, Shizuoka, Japan

■ Relative information on INON web site ■

- 「28M67 series attachment lens, 『UWL-H100 28M67 Wide Conversion Lens Type1/Type2』」
<http://www.inon.jp/products/lens/uwlh10028m67/top.html>
- Super wide option 「Dome Lens Unit II for UWL-H100」
http://www.inon.jp/products/lens/domelensunit2_uwlh100/top.html
- 「M67 series attachment lens 『UCL-330』 Close-up Lens」
<http://www.inon.jp/products/lens/ucl330/top.html>
- 「M67 series attachment lens 『UCL-165M6』 Close-up Lens」
<http://www.inon.jp/products/lens/ucl165m67/top.html>
- 【News】 Release of 「UCL-100LD/ 「UCL-100M67」」
<http://inonnews.blogspot.jp/2013/02/ucl-100lducl-100m67-close-up-lens.html>
- 「Underwater micro fisheye lens 『UFL-M150 ZM80』」
<http://www.inon.jp/products/lens/ufl150zm80/top.html>
- 「Underwater “S-TTL” Auto strobe 『S-2000』」
<http://www.inon.jp/products/strobe/s2000/top.html>
- 「Underwater “S-TTL” Auto strobe 『D-2000』」
<http://www.inon.jp/products/strobe/d2000/top.html>
- 「Underwater “S-TTL” Auto strobe 『Z-240』」
<http://www.inon.jp/products/strobe/z240/top.html>
- 【News】 Release of 『LF1100-W』
<http://inonnews.blogspot.jp/2014/10/lf1100-w.html>
- 「Underwater LED handheld light 『LF1400-S』」
- 「Underwater LED handheld light 『LF1000-S』」
- 「Underwater LED handheld light 『LE700-S』」
- 「Water-Proof LED handheld light 『LE350』」
http://www.inon.jp/products/le_light/lineup.html
- 「Grip Base M1」
<http://www.inon.jp/products/armssystem/base.html#gripbaseM1>
- 「Shoe Base」
<http://www.inon.jp/products/armssystem/base.html#shoebase>

October 22nd, 2014

INON INC.

*Press release information is as of October 22nd, 2014 and subject to change without prior notice.

INON

The home of ultimate underwater imaging gear

www.inon.jp