

# SeaOtter-2 and SeaLion-2 Options

## MANIPULATOR ARM



The single function manipulator with open/close claw makes your ROV more than just an underwater eye. Pick up light weight samples from the ocean floor, bring a line down to mark a wreck, or carry an acoustic beacon to a dive site. The arm is constructed of corrosive proof PVC. A switch on the top-side control box opens or closes the claw.

## ON SCREEN DISPLAY

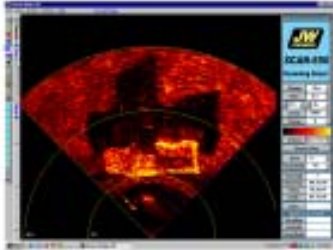


Sensors

The on screen display option displays time, date, and the boat's GPS position on the video monitor. Additional optional sensors, mounted on the ROV, displays the ROV's compass heading, it's depth, and the water temperature.

**TECHNICAL DATA SHEET AVAILABLE**

## SCANNING SONAR



A scanning sonar that mounts on top of a ROV and provides a sonar image displayed on a laptop PC. The sonar allows the operator to see objects well beyond camera range and operates in zero visibility water.

**TECHNICAL DATA SHEET AVAILABLE**

## RMD-1 METAL DETECTOR



RMD-1 Control Box

The RMD-1 attaches to any ROV and makes it a roving metal detector. Find buried pipes, cables, anchors, etc., quickly and easily with the RMD-1.

**TECHNICAL DATA SHEET AVAILABLE**

## BASIC SPARE PARTS KIT



Essential parts to make field repairs on your ROV. Kit includes complete thruster assembly, dome, two bulbs, light housing, leg, assorted O-rings and hardware.

## EXTENSION CABLE



Neutrally buoyant extension cable which fits between the ROV and the 250' cable that comes with the ROV. Total maximum cable length for the SeaOtter-2 is 500', and 1,500' for the SeaLion-2

## SIDE CAMERAS



Left Side Camera

Two color side cameras, with LED lighting, can be attached to the SeaLion-2. Operator can individually view each of the four cameras. Side Cameras can be manually adjusted to view straight out or angled upward/downward.

There are a variety of options available for the SeaOtter-2 and SeaLion-2 . These options give the ROV a tremendous amount of versatility. With a few different options, your JWF ROV can perform many different tasks. Adding options to your ROV enhances it's capabilities and increases the value you can offer your customers.

Some options are field installable on your ROV, others are not. Check with JWF before ordering your system.



**JW FISHERS MFG INC**

1953 COUNTY ST.

E. TAUNTON, MASS 02718 USA

Distributor in Norway: Marin Foto, contact Jan Erik Nyggard at [marin@uvfoto.com](mailto:marin@uvfoto.com) or Mobile 920 23 248