

Accessories for Compact Digital Cameras

Sea Arm & Stay

The perfect companion arm set for compact digital camera housings. This arm set is designed to be very mobile, compact, and light.

*Compatibility depends on the model of the waterproof case.

Sea Arm Light Single Set

[20503]

[Construction] Glass fiber fortified nylon
[The Sea Arm Light Single Set includes]

- ① 2 compact light arms: 130mm / 5.1inch x 2
- ② Compact light joint: 50x45mm / 2.0x1.8inch
- ③ Compact light multi stay: 135x65x27mm / 5.3x2.6x1.1inch
- ④ Light stay adaptor: 76x36x36mm / 3.0x1.4x1.4inch
- ⑤ Compact light knob: 45x16mm / 1.8x0.6inch

*Total weight of the Sea Arm Light Single Set: 330g / 11.6oz.



Sea Arm Light Arm Set

[24101]

Multi Stay Set & Bracket Shoe

Multi Stay Set

[21100]

A stay is used to assemble arms and strobes with a camera or housing. It is an essential component in your underwater photography system. The SEA&SEA Multi Stay is a complete set of parts designed to be custom-configured to accommodate your specific system.

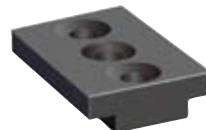
[Includes] ① Multi stay base ② Arm Adapter x 2



Bracket Shoe

[20100]

Attaches Sea Arm VII or flexible light arm to grip or stay (screws included).



Grip Stay

Grip-Stay S **NEW**

[22107]

The tray and arm hold your camera and housing and a compact underwater strobe or a compact underwater video light. A fiber-optic cable can be laced into the arm (grip) for easy operation.

[Dimensions (WxHxD)] 216x184x72.5mm / 8.6x7.4x2.9inch
[Weight] Approx. 300g / 10.5oz

[Construction] Plastic, stainless steel, brass and rubber



Arm & Stay

DX Arm

[21140]

A flexible arm suitable for mini strobes or small underwater light. Attaches to DX stay and multistay set.



DX Stay

[21130]

A lightweight stay that attaches SEA&SEA strobes and lights to digital cameras. Compatible with most digital cameras. Constructed of lightweight corrosion-resistant resin compound.

[Included] Bracket Shoe



Fiber Optic Cable for Compact Digital Cameras

Fiber-Optic Cable (L-type)

[50107]

This fiber-optic cable resists bending and has improved light-conducting efficiency.



Strobe Mask Set

[50109]

Stick the Velcro tape to the underwater housing covering the camera's built-in flash. Connect the Fiber-optic cable (L-type).

*The Velcro tape to be cut off in accordance with the shape of the housing.
*Compatibility depends on the model of the housing.



Close-UP Lens 125 **NEW**

[52119]

*The appropriate Close-UP Lens Ring is required to attach to the DX-2G / DX-1G / DX-1200HD housings. (Magnification can be multiplied by stacking them.)



Ballast Weight

Ballast Weight

[22102]

This weight can be used to adjust the buoyancy when the housing is used without accessories.

*This cannot be used together with an optional stay.

*This cannot be attached to DX-2G / DX-1G housings.



Desiccant

Desiccant Pack (silica gel)

*5 packs in a hermetically sealed package

[62108]

Keep your digital camera dry in humid conditions: a silica gel pack inside your housing absorbs moisture and prevents condensation.

