

SeaLife®

Cameras, lighting, and accessories

2020



SeaLife®



Micro 2.0, Sea Dragon 2500F



DC2000, Sea Dragon Universal Flash



Micro 2.0, Sea Dragon 2500F



DC2000, Sea Dragon 3000F Auto



DC2000, Sea Dragon Universal Flash



DC2000, Sea Dragon 4500F Auto



DC2000, Sea Dragon 5000F Auto



DC2000 Pro Duo



Micro 2.0 Pro 2500



RM-4K 2000 Set

For over 25 years, SeaLife has captured incredible memories of your undersea encounters with our award-winning cameras, Sea Dragon lighting and Flex-Connect accessories.

Where will your next underwater adventure take you?



SeaLife®

SEA DRAGON® flex-connect®

SeaLife ReefMaster RM-4K

4K Extreme Compact

Compact ultra-high definition underwater camera

Capture **vibrant 14mp still images and brilliant 4K video** with a ultra-compact camera especially designed for the underwater environment. The **ReefMaster RM-4K** makes it possible. Waterproof to 130ft/40m, the ReefMaster RM-4K underwater camera is a game changer in underwater imaging; the housing is robust and designed to be hand-held, tray mounted or worn on your head, mask or body. Unlike cheaper plastic box-style enclosures included with popular action cameras, the unique ReefMaster Dive housing assures consistent waterproof performance with its “Pressure-Lock” sealing system.

The ReefMaster RM-4K pairs easily with a variety of **Sea Dragon Photo/Video Lights**, to add vibrant colors and detail.



REEFMASTER® RM-4K Ultra Compact Underwater Camera

Item SL350

Experience unparalleled ease-of-use with the ReefMaster RM-4K, featuring a pocket-sized design with a 14 megapixel Panasonic® CMOS image sensor and ultra-high definition 4K video. The compact, portable design ensures you can take the ReefMaster anywhere. The built-in Fisheye lens allows you to closely approach your subject while still keeping everything in the picture. And with SeaLife's know-how in underwater lighting, you'll easily be able to pair your RM-4K with a variety of Sea Dragon Photo/Video lights for any underwater scene or situation.



TECHNICAL FEATURES

- 14 Megapixel Panasonic® CMOS image sensor** for sharp, colorful pictures
- 4K Ultra HD Video at 30fps** and 1080p HD Video at 60fps
- 40m/130ft Compact Underwater Housing**
- Humidity Control** with replaceable Moisture Muncher dry capsules
- Wide Angle Fisheye Lens** to get close to your subject and still get everything in the picture
- 2.0" TFT color LCD Display** to keep you on your subject and for quick review of your underwater adventure

SPECIAL FEATURES

- Waterproof to 130ft / 40m** using “Pressure-Lock” thumb screw sealing system
- Easy 4 button controls** for easy operation
- WiFi** to wirelessly preview, download and share pictures & videos to smart phone or tablet with a free app from Google or Apple
- Expandable memory** with micro SDHC memory card up to 128GB
- Compact design** for easy handling and lightweight travel
- Removable Li-ion rechargeable battery** (1100 mAh / 3.8V / 4.2Wh for 2+ hours video or 500+ images)
- Focus from 12” (30cm) to infinity** – optional Macro Lenses available
- Time lapse shooting at set time intervals** – saves as video file or series of still images
- Expandable with one or more SeaLife Sea Dragon Photo/Video Lights**

Removable, compact inner camera features a 2.0" TFT color LCD screen



REEFMASTER® Camera & Light Set



ReefMaster RM-4K Camera & Light Set

Item SL354

Add the Sea Dragon 2000F Photo/Video Light to the RM-4K, and shoot vivid underwater colors in both still images and videos. The wide beam angle of the Sea Dragon 2000 complements the camera for nearly complete coverage of the shooting angle. The set includes the RM-4K camera, Flex-Connect Micro Tray, Grip, and Sea Dragon 2000F light.



SeaLife Micro 2.0: Great Pictures Made Easy



micro 2.0™ Underwater Camera

Item SL510 32GB / Item SL512 64GB

Experience the undersea world with the permanently sealed, flood-proof SeaLife Micro 2.0 underwater camera. The easy-to-use Micro 2.0 is ready to dive right out of the box. No O-rings to maintain, and no need to worry about leaks. Just charge it and go!

The brilliant performance of the Micro 2.0 comes from the 16 megapixel SONY® CMOS sensor that captures amazing color and detail. Small and ergonomic, the Micro 2.0 camera is easy to handle underwater, operating with three wide “Piano Key” controls. An Easy Setup Guide provides a fast and intuitive way to select a color correction mode for your diving environment, allowing you more time diving and less time scrolling through menus.



micro 2.0™ Underwater Camera



WiFi to wirelessly view, download and share pictures and videos to smart device using the **SeaLife Micro Cam app**

TECHNICAL FEATURES

- Permanently sealed: 32GB or 64GB of internal memory
- SONY® CMOS 16 megapixel image sensor
- Full HD 1080p @60fps video resolution
- Focus from 12in / 30cm to infinity
- 2.4" TFT LCD color display
- 2350 mAh, 3.7V. 8.7Wh lithium ion battery for 3+ hours

SPECIAL FEATURES

- Easy Set-up mode:** on-screen guide is simple, fast and intuitive
- 4 Land & Sea™ scene modes:** Land, Dive, Snorkel, and Light
- 3 built-in underwater color correction filters**
- 3 Wide “Piano Key” Controls** for easy operation, even with dive gloves on
- Adjustable field of view:** 130° Wide (default), 100° Medium or 80° Narrow
- WiFi** to wirelessly preview, download and share pictures/videos
- Up to 64GB of internal memory**, 25,000+ 16MP stills or 12+ hours of full 1080p HD video
- Time lapse shooting mode, upside shooting mode, shortcut mode**
- Expandable** with 10x Close Up Lens, Super Macro Lens and Sea Dragon Photo/Video Lights
- Depth rated to 200ft / 60m**



2.4" LCD display and “Piano Key” controls for easy underwater use

micro 2.0™ Camera Sets



Micro 2.0 Pro 2000 Item SL517

Ideal for colorful and sharp stills and videos, the Micro 2.0 Sea Dragon 2000 Pro includes the Sea Dragon 2000 Photo/Video Light, Micro 2.0 32GB WiFi Camera, Flex-Connect Micro Tray, and Grip for stability and handling. The Sea Dragon 2000 Light has a Color Rendering Index of 80, 5700k color temperature to simulate natural sunlight, adding beautiful colors to underwater photos and videos.



Micro 2.0 Pro 2500 Item SL516

Reveal stunning colors with the Micro 2.0 Pro 2500. The Micro 2.0 Pro 2500 pairs the Micro 2.0 64GB WiFi underwater camera with the powerful Sea Dragon 2500F light, Flex-Connect Micro Tray, Grip, Flex Arm and case. Featuring an ultra-wide 120° beam, high Color Rendering Index of 90 and 5000k color temperature, the sun-like Sea Dragon 2500F produces underwater images and videos bursting with color.



Micro 2.0 Pro 4000 Item SL519

The Micro 2.0 Pro 4000 combines two sun-like Sea Dragon 2000 Lights with the Micro 2.0 32GB WiFi underwater camera to create the a versatile package for the underwater photographer. The set packs an astonishing 4000 lumens, capturing rich and natural color in underwater photos and videos while the ergonomic Flex-Connect Dual Tray and Grips provide stability and easy handling. Dual lighting also minimizes shadows in your photos and videos.

SeaLife DC2000
Encounter.
Capture.
Create.



Inner camera waterproof
up to 60ft / 18m

DC2000™ Underwater Camera

Item SL740

Enjoy full creative freedom, with breathtaking images and incredible ease of use. SeaLife introduces their most sophisticated underwater camera yet, the SeaLife DC2000. With a large SONY® 1" type back-illuminated 20 megapixel image sensor and RAW format capabilities, the DC2000 will let your underwater inspirations guide you to stunning results.

The best of both worlds: With DSLR-like imaging results you'll want to make the DC2000's waterproof inner camera your go-to land camera with the ability to create rich landscapes and beautiful close-ups and portraits.

DC2000™ Underwater Camera



Select from 8
shooting modes



TECHNICAL FEATURES

SONY® 1" back-illuminated 20MP image sensor

Full HD 1080p @ 60fps video resolution

JPEG & RAW Image Format for high-resolution, uncompressed files for editing (.dng format)

Auto Focus from 4 in / 10 cm to infinity

3" 920k high resolution color LCD display

Powerful 1130 mAh 3.7V lithium ion removable battery for 2+ hours of operation (Spare Battery Item SL7404)

SPECIAL FEATURES

Ultra-fast auto focus with 0.1 second shutter response time

7-element, fully multi-coated optical grade aspheric lens

4 underwater modes with built-in color correction

25 Land Scene modes for various shooting environments

3 built-in underwater digital color correction filters

Manual aperture control from F1.8 to F11 in 17 stops

Intelligent Auto mode selects optimal land scene mode for shooting

Continuous Burst Shooting captures high resolution pictures at 10 frames per second

DIS Video Stabilization Digital Image Shift technology reduces camera shake caused by hand movement when recording video

Manual White Balance control to customize color

Manual shutter and aperture control options

Micro SD, SDHC SDXC and UHS-1 memory card

WiFi to wirelessly preview, download and share pictures/videos to a smart device

Expandable with Fisheye and Wide Angle Lens, Sea Dragon Flash and Photo/Video Lights

Inner camera waterproof up to 60ft / 18m

Shooting angle: Land 66°, Underwater 50°

Depth rated to 200 feet / 60 meters

DC2000™ Camera Sets



**DC2000 Pro Flash
Item SL745**

Bring out amazing colors in your still images with the intuitive DC2000 Pro Flash. Paired with the DC2000, the Sea Dragon Flash strobe produces rich, vibrant colors. The powerful Sea Drag-on Flash pairs with the DC2000 instantly and is manually adjustable for intensity in addition to its "auto" setting. The set includes a Flex-Connect Single Tray, Grip, Sea Dragon Flash with diffuser (for even, wide coverage), and the DC2000 underwater camera.



**DC2000 Pro 3000 Auto
Item SL747**

Combined with the powerful Sea Dragon 3000F Light and the DC2000 underwater camera, the DC2000 Pro Light will capture vibrant underwater colors that are typically muted and color-less. The sun-like Sea Dragon 3000F will make stills and videos extraordinary. The set includes Flex-Connect Single Tray, Grip, Sea Dragon 3000F light, and DC2000 underwater camera.



**DC2000 Pro Duo
Item SL749**

Designed for shooting colorful underwater stills and HD video, the DC2000 Pro Duo is equipped with the DC2000 camera, Sea Dragon 3000F Auto light, and Sea Dragon Flash. The versatile set gives the diver the ability to use the light and strobe simultaneously. The Sea Dragon 3000F Auto light "Flash Detect Mode" that automatically turns off the (white or red LED) light for a second when shooting with an external flash. Includes two Flex-Connect Grips and Dual Tray for effortless handling. Easily expandable with optional flex arms, lenses and lights.

Bring out vibrant colors with Sea Dragon Photo/Video lights and strobes



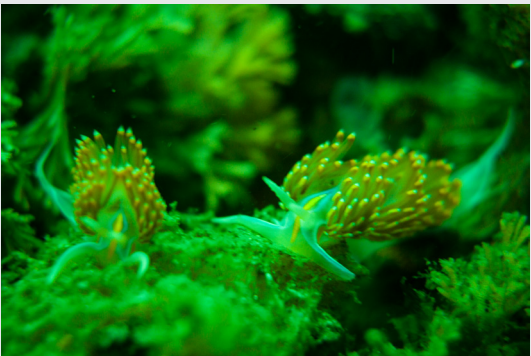
Sea Dragon Photo/Video Lights

Lighting, whether by strobe or LED, is the single most important underwater imaging feature next to your camera.

With SeaLife's Sea Dragon lights, you'll get the brightness, color rendering, temperature, and beam angle to produce amazing magazine quality stills and brilliant underwater video.



The Sea Dragon 3000F uses a flat panel COB LED array that closely mimics natural sunlight.

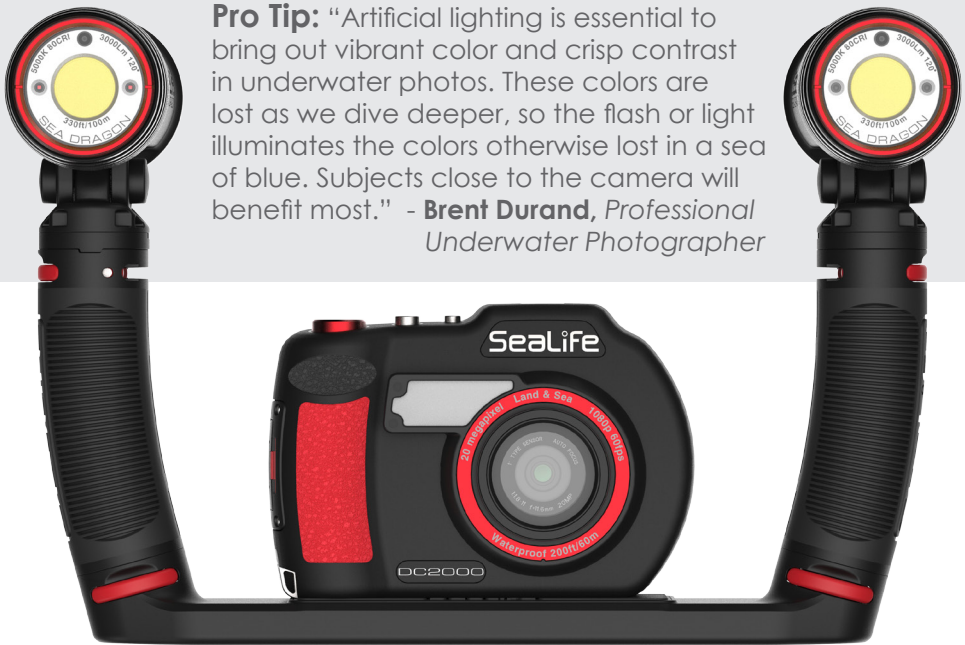


Without Photo/Video Light



With Photo/Video Light

Pro Tip: "Artificial lighting is essential to bring out vibrant color and crisp contrast in underwater photos. These colors are lost as we dive deeper, so the flash or light illuminates the colors otherwise lost in a sea of blue. Subjects close to the camera will benefit most." - **Brent Durand**, Professional Underwater Photographer



Sea Dragon 2000F
Item SL677

The new Sea Dragon 2000F Photo/Video Light delivers 2000 true lumens and a smooth, even 120° wide beam angle. This revolutionary COB LED technology produces an 80 CRI (color rendering index) that mimics natural daylight.

Most other LEDs have 70 CRI, missing wavelengths of the visible light spectrum. Uncover colorful reefs and hidden sea creatures with this photo/video light. Includes Flex-Connect Micro tray and grip.



Sea Dragon 2500F
Item SL671

The Sea Dragon 2500F uses flat panel COB LED technology to closely mimic natural sunlight, bringing out amazing colors in underwater photos and videos.

With a Color Rendering Index of 90, the Sea Dragon 2500F solves the issue of blue underwater photos and videos by giving divers the ability to add light down to 200 feet/60 meters with portable sunlight.



Sea Dragon Flash
Item SL963

Universally compatible with SeaLife and most other cameras using an internal flash, the Sea Dragon Flash features variable power adjustment and large controls to easily fine tune brightness.

In **Auto Mode**, the flash will automatically adjust brightness for optimal exposure. The Sea Dragon Flash automatically "learns" your camera's pre-flash.

Includes optical cable, 7mm cable plug, universal flash link adapter, diffuser, single tray, grip and case.



The diffuser provides a wide 100° beam, spread evenly, preventing hot spots.

Sea Dragon 3000F Auto
Item SL678

The Sea Dragon 3000F Auto delivers 3000 lumens over 120° smooth, even beam angle without a hot spot. **Two red LEDs** emit a 88° wide "stealth mode" beam that won't scare away nighttime sea creatures and preserves your eye's natural night vision. Powered by a rechargeable 25Wh lithium ion battery, the light burns for a full hour at 100% power at constant brightness with its new COB LED 120° beam angle. Depth rated to 330ft / 100m.

The Sea Dragon 3000F Auto includes a Flex-Connect Grip and single tray. Easily expandable with Flex-Connect Grips, Arms, and Trays.



Also available as a light head (SL6780).



SeaLife's Auto Modes

Select the **Auto Bright Mode** and the **3000F light's** photocell light sensor will **automatically regulate brightness based on proximity** to the object in 10-step brightness levels; look at something close like a gauge or your computer, and the light will reduce to 10% brightness output; look at a long distance, and the light automatically adjusts to full power.

The **Auto Bright Mode** can be easily overridden if a constant brightness level is preferred by simply selecting the 100%, 50% or 25% brightness through the main control button.

Two red LEDs create a "stealth mode" beam.



The Sea Dragon 3000F Auto's **Auto Flash Detect Mode** turns the light off for one second when an external flash is detected. This assures a well lit photo and prevents shadows in your images. Auto Flash Detect Mode can also be turned off if this feature is not desired.

Sea Dragon Pro Series Auto Photo/Video Lights

With SeaLife's **Sea Dragon lights**, you'll get the **brightness, color rendering, temperature, and beam angle** to produce **magazine quality stills and brilliant underwater video**.



- Sea Dragon 5000F Features:**
- COB LED
 - Auto Flash Detect Mode & Auto Brightness Mode
 - 5000 lumen white flood
 - 100%, 75%, 50%, 25%, Auto, Red Light, SOS and Emergency Blinking Mode
 - *120° beam angle above water and 90° underwater
 - 50 minute run time (full power); up to 3.3 hours at 25% power (using 50Wh Li-ion rechargeable battery pack)
 - Depth rated to 330ft / 100m



Sea Dragon 5000F Auto Item SL676

The **Sea Dragon 5000F Auto** combines a new compact head design with new features and a boost in lumen output. The even 120° wide beam that runs for 50 minutes at the highest power setting. Two 88° 220 lumen red LED's give you a stealth mode that allows approach and image capture of nighttime sea creatures with the light's automatic feature turning the light off when a strobe is used. The 5000 lumen COB LED maintains an impressive 96 CRI and 97 TLCI value. Four manual power settings, automatic brightness setting based on distance to the subject, and red light.

Includes Standard YS Mount , 1" Ball Mount, & Flex-Connect YS Adapter.



Two red LED's emit 180 lumens, 88° wide beams "stealth mode" that won't scare away nighttime sea creatures and preserves your eye's natural night vision.

Why an Auto (Automatic) Light?

Auto" lights offer two distinct features over other underwater lights: **The Auto light automatically adjusts brightness to the optimal amount needed to see or shoot pictures/videos**. This will save battery power for longer run time and preserve your eye's natural low-light vision. A light sensor on the front face of the light constantly measures the amount of light reflecting back from the object. The light will dim when aimed at close-up objects and increase brightness [to full brightness] at far away objects. Auto lights also include manual brightness control if you prefer consistent light output.

The other purpose of the Auto light is to detect when your external flash (strobe) flashes, and temporarily turns off the photo/video light for one second. This prevents unwanted shadows and backscatter that may be caused by the photo/video light. You can easily enable or disable the Auto Flash detect feature.

Photo Light Sensor



Tobias Friedrich started taking underwater photos in 2007. Since then his images have been published in prestigious scuba diving magazines such as Sport Diver, Unterwasser, Tauchen, Scuba Diver, Through The Lens and many others.



Shoot with 9000 Lumens with our Sea Dragon 9000F Set (SL692), featuring two Sea Dragon 4500F Auto lights, two grips, two flex-arms, and dual tray. Item also shown in above image.



Pro Tip: Capturing Quick Creatures By Tobias Friedrich
Lembeh Strait, North Sulawesi, Indonesia

Quick swimming clownfish are not always easy to catch with a camera. So take focus on a point of the anemone where the fish will be likely to appear, and press the shutter button quickly once it swims into focus.

Equipment: SeaLife DC2000, Sea Dragon 4500F, Super Macro Lens
Settings: ISO 125, f/2.2, 1/80s



The **Sea Dragon 4500F & 5000F** come with a standard YS Adapter and Flex-Connect Adapter, for easy expansion with any YS compatible arms or with SeaLife's Flex-Connect system of arms, grips, trays and mounts.



Sea Dragon 4500F Features:

- COB LED
- Auto Flash Detect Mode & Auto Brightness Mode
- 4500 lumen white flood
- 100%, 75%, 50%, 25%, Auto, SOS and Emergency Blinking Mode
- *120° beam angle above water and 90° underwater
- 55 minute run time (full power); up to 4 hours at 25% power (using 50W Li-ion rechargeable battery pack)
- Depth rated to 330ft / 100m

Sea Dragon 4500F Auto Item SL675

The **Sea Dragon 4500F Auto** is a high power professional underwater imaging light that not only gives you brightness but also adds color and warmth, all with a smooth, even 120° wide beam that runs 50 minutes at the highest power setting. The 4500 lumen COB LED delivers an impressive 96 CRI and TLCI value of 97. Both values compare to natural sunlight, with 100 being the highest – or as "true sunlight". Four manual power settings, plus an automatic brightness setting based on distance to the subject.

Includes Standard YS Mount , 1" Ball Mount, & Flex-Connect YS Adapter.

Compact/Handheld Lights



Sea Dragon Mini 1000F Item SLKIT07

The Sea Dragon Mini 1000F offers a ultrawide 130° beam that mates perfectly with an action camera as a primary light source, or on larger cameras as a very capable focusing light. Easy one button operation with a back-lit three color battery status indicator. 90 minute run time at full power, 180 minutes at half power (with optional 18650 3500mAh 3.7V battery). The wide 1000 lumen beam is a compact solution for photos, videos and wide area illumination. See next page for detailed features.

Includes 18650 2600mAh 3.7V battery (65 minutes of run time at full power), 18650 USB Battery Charger, YS mount, GoPro camera mount and AquaPod pole adapter, lanyard with BC clip, spare O-rings and lube.



Easily mount the Sea Dragon 1000F onto the Flex-Connect system.

This light also includes a GoPro® Camera mount.

Sea Dragon Mini 900S Item SL653

With the Sea Dragon Mini 900 Underwater Dive Light, a high intensity long-range beam meets ultra-compact design. The Mini 900 features a 14° spot beam and three easy one-handed access power levels plus emergency one-second and SOS flash. A heavy duty BC lanyard and clip is included. The light runs on two CR123 or a single rechargeable 18650 Li battery (batteries not included).



SPECIAL FEATURES

- CREE XM-L2 T6 LED
- 100%, 50%, 25%, one second blink, emergency SOS
- 14° beam angle (10.5° underwater)
- 120 minute run time (full power); up to 8 hours at 25% power (using 3500mAh Li battery)
- Depth rated to 330ft / 100m

Sea Dragon Mini 1300S Item SL654

The Sea Dragon Mini 1300S Underwater Dive Light gives you a tight, high intensity long-range beam for maximum distance. The Mini 1300 features a 8° spot beam and three easy one-handed access power levels plus emergency one-second and SOS flash. A heavy duty BC lanyard and clip is included. The light runs on two CR123 or a single rechargeable 18650 Li battery (batteries not included).



SPECIAL FEATURES

- Luxeon V LED
- 100%, 50%, 25%, one second blink, emergency SOS
- 8° beam angle (6° underwater)
- 85 minute run time (full power); up to 5.5 hours at 25% power (using 3500mAh Li battery)
- Depth rated to 330ft / 100m



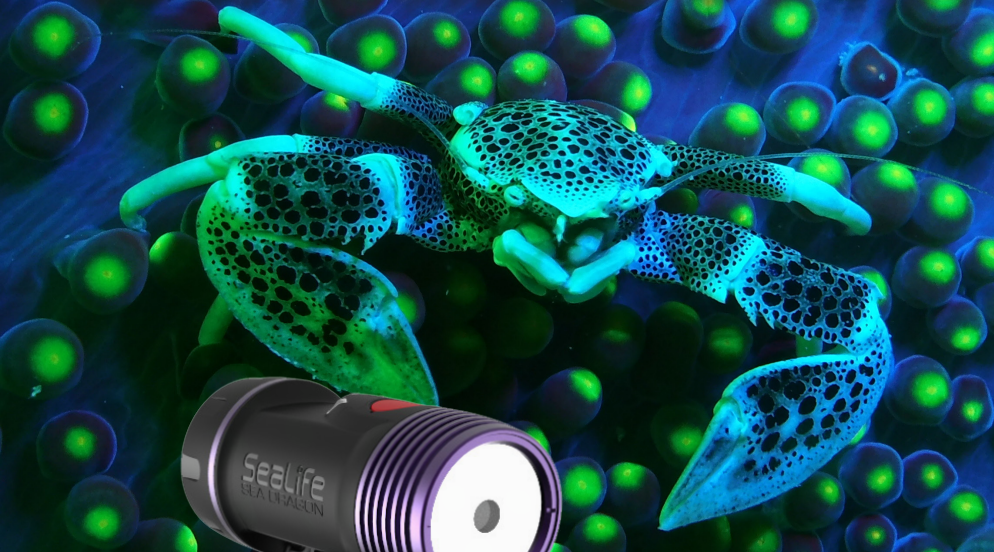
Compact Light Power Kits



These Sea Dragon Mini Light Power Kits pair the Mini Dive & Imaging Lights with a 2600mAh rechargeable Lithium-ion 18650 battery and a compact USB battery charger.

- Sea Dragon Mini 900S Power Kit Item SLKIT06
- Sea Dragon Mini 1000F Power Kit Item SLKIT07
- Sea Dragon Mini 1300S Power Kit Item SLKIT08

Discover the World of Fluoro



Sea Dragon Fluoro-Dual Beam Item SL673

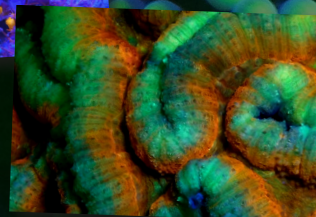
In partnership with Fire Dive Gear, SeaLife developed their Sea Dragon Fluoro-Dual Beam that emits a powerful blue light beam and adds an integrated dichroic filter creating the optimal light wavelength to excite underwater life. The integrated LED driver circuitry allows the light to operate at constant brightness throughout the battery life, so the light will not dim as battery power is reduced.

Switchable beams quickly adjust with the push of a button from blue fluoro 65° flood to white 800 lumen 15° spot, making the Fluoro-Dual Beam a truly versatile dive light. A removable 25Wh lithium ion battery delivers power for a full 60 minutes at full fluoro brightness.

The Sea Dragon Fluoro-Dual Beam also includes two essential yellow barrier filters; one for optimal fluoro-viewing and a universal lens cover for imaging.

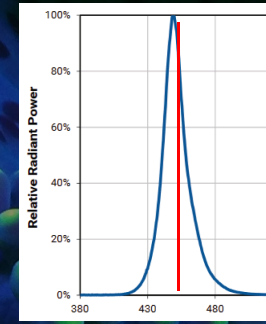


The Fluoro-Dual Beam includes a Flex-Connect grip, single tray and SL995 Ball Joint Adapter for a universal fit.



800 lumens
65°+15° beam + spot

Why use a dichroic filter? The CREE Royal Blue LEDs emit a light wavelength that ranges between 440nm and 465nm, but a tighter 455nm wavelength is needed for an optimal fluoro effect.

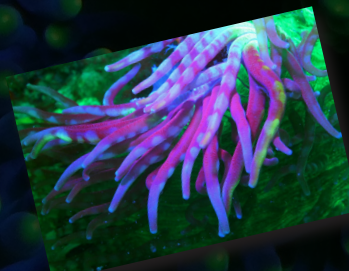


SPECIAL FEATURES

- CREE XT-E Royal Blue LED with Integrated Dichroic filter
- 7 watt/m² brightness at full power, 4.3 W/m2 at medium and 2.1 W/m2 at low power
- 14° beam angle above water and 10.5° underwater
- 120 minute run time (full power); up to 8 hours at low power (using 3500mAh Li battery)
- Depth rated to 330ft / 100m

Sea Dragon Mini Fluoro Item SL655

The Sea Dragon Mini Fluoro Underwater Fluoro Light's royal blue LED emits a blue light combined with a finely tuned and proprietary dichroic filter that pinpoints the exact light wavelength to get the highest energy response from the underwater plant or creature for an amazing underwater light show. The light functions are easy, with simple one handed operation and three Fluoro power levels. And to eliminate any excess blue light, a yellow barrier mask filter is included. Runs on two CR123 or a single rechargeable 18650 Li battery (batteries not included).



The Sea Dragon Mini Fluoro also comes with a mask filter.



COB Auto Photo/Video Lights



Sea Dragon 5000F Auto
Item SL676



Sea Dragon 4500F Auto
Item SL675



Sea Dragon 3000F Auto
Item SL678

| | | | |
|--------------------|--|--|---|
| Light Source | COB LED Luminus XNOVA Studio | COB LED Luminus XNOVA Studio | 1x COB LED Bridgelux Gen 7 Vero 2x CREE XP-E red LEDs |
| Brightness | White Light: 5000 Lumens Red Light: 220 Lumens | 4500 Lumens | White Light: 3000 Lumens Red Light: 180 Lumens |
| Brightness Levels | 100%, 75%, 50%, 25%, Auto, Red | 100%, 75%, 50%, 25%, Auto | 100%, 50%, 25%, Auto, Red |
| Light Modes | Automatic, constant or emergency signal | Automatic, constant or emergency signal | Automatic, constant or emergency signal |
| Color Temperature | 5600k | 5600k | 5000k |
| CRI* | 96 | 96 | 80 |
| Beam Angle | 120° | 120° | 120° |
| Battery | Lithium Ion 14.8V, 3400 mAh, 50Wh <i>(included)</i> | Lithium Ion 14.8V, 3400 mAh, 50Wh <i>(included)</i> | Lithium Ion 7.4V, 3400 mAh, 25Wh <i>(included)</i> |
| Run Time (@100%) | 50 minutes | 55 minutes | 60 minutes |
| Depth | 330ft / 100m | 330ft / 100m | 330ft / 100m |
| Head Only Item | N/A | N/A | Item SL6780 |
| Included Tray/Grip | YS Mount, YS & 1" Ball Joint adapter, Sea Dragon Case | YS Mount, YS & 1" Ball Joint adapter, Sea Dragon Case | Single Tray, Grip, Sea Dragon Case, GoPro® camera adapter |

COB & LED Photo/Video Lights



Sea Dragon 2500F
Item SL671



Sea Dragon 2000F
Item SL677



Sea Dragon Mini 1000F
Item SLKITO7

| | | | |
|--------------------|---|---|---|
| Light Source | COB LED Bridgelux Vero 18 | COB LED CREE CXA1816 | Luxeon V LED |
| Brightness | 2500 Lumens | 2000 Lumens | 1000 Lumens |
| Brightness Levels | 100%, 50%, 25% | 100%, 50%, 25% | 100%, 50%, 25% |
| Light Modes | Constant or emergency signal | Constant or emergency signal | Constant, Emergency SOS or Emergency Blink |
| Color Temperature | 5000k | 5000k | 6000k - 6500k |
| CRI* | 90 | 80 | 70 |
| Beam Angle | 120° | 120° | 130° |
| Battery | Lithium Ion 7.4V, 3400 mAh, 25Wh <i>(included)</i> | Lithium Ion 7.4V, 3400 mAh, 25Wh <i>(included)</i> | 18650 Li-ion 2600mAh rechargeable battery <i>(included)</i> |
| Run Time (@100%) | 60 minutes | 60 minutes | 60 minutes |
| Depth | 330ft / 100m | 330ft / 100m | 330ft / 100m |
| Head Only Item | Item SL6712 | Item SL6770 | N/A |
| Included Tray/Grip | Single Tray, Grip, Sea Dragon Case, GoPro® camera adapter | Micro Tray, Grip, GoPro® camera adapter | N/A |

Strobes



Sea Dragon Universal Flash
Item SL963



Sea Dragon Duo 3000 Flash
Item SL690



Sea Dragon Duo X2 Flash
Item SL988

| | | | |
|--------------------|---|---|---|
| Light Source | 1 x XENON Flash Tube | COB LED Bridgelux Vero 18 3000 (Auto) 1 x XENON Flash Tube (Flash) | 2 x XENON Flash Tube |
| Brightness | Guide Number 20 66' (20m) full power/ 5' (1.5m) low | 3000 / Flash | Guide Number 20 66' (20m) full power/ 5' (1.5m) low |
| Brightness Levels | Manual 8% to 100%, Auto | 100%, 50%, 25%, Auto / Flash | Manual 8% to 100%, Auto |
| Light Modes | Automatic or manual | Constant, Auto, Flash | Automatic or manual |
| Color Temperature | 5700k, 5400k (diffuser) | 5000k ~ 6000k | 5700k, 5400k (diffuser) |
| CRI* | 98 | 80 / 98 | 98 |
| Beam Angle | 80° horizontal x 60° vertical, 100° x 100° (diffuser) | 120° x 100° | 80° horizontal x 60° vertical, 100° x 100° (diffuser) |
| Battery | 4 AA Batteries <i>(not included)</i> | Lithium Ion 7.4V, 3400 mAh, 25Wh (3000 Auto) / 4AA (Flash) | 4 AA Batteries <i>(not included)</i> |
| Run Time (@100%) | 250 flashes at full brightness (with Energizer Lithium AA) | 60 minutes / 250 flashes | 250 flashes at full brightness (with Energizer Lithium AA) |
| Depth | 200ft / 60m | 200ft / 60m | 200ft / 60m |
| Head Only Item | Item SL9631 | Item SL6780 / Item SL9631 | Item SL9631 |
| Included Tray/Grip | Single Tray, Grip, Sea Dragon Case | Dual Tray, 2x Grip, Travel Case, GoPro® camera adapter | Dual Tray, 2x Grip, Travel Case, GoPro® camera adapter |

Duo Light Sets



Sea Dragon Duo 5000
Item SL989



Sea Dragon Duo 6000
Item SL691



Sea Dragon Duo 9000
Item SL692

| | | | |
|--------------------|---|--|---|
| Light Source | 2x COB LED Bridgelux Vero 18 | 2x COB LED Bridgelux Gen 7 Vero 4x CREE XP-E red LEDs | 2x COB LED Luminus XNOVA Studio |
| Brightness | 2x 2500 Lumens | 2x 3000 Lumens | 2x 4500 Lumens |
| Brightness Levels | 100%, 50%, 25% | 100%, 50%, 25%, Auto, Red | 100%, 75%, 50%, 25%, Auto |
| Light Modes | Constant or emergency signal | Automatic, constant or emergency signal | Constant or emergency signal |
| Color Temperature | 5000k | 5000k | 5600k |
| CRI* | 90 | 80 | 96 |
| Beam Angle | 120° | 120° | 120° |
| Battery | Lithium Ion 7.4V, 3400 mAh, 25Wh <i>(included)</i> | Lithium Ion 7.4V, 3400 mAh, 25Wh <i>(included)</i> | Lithium Ion 14.8V, 3400 mAh, 50Wh <i>(included)</i> |
| Run Time (@100%) | 60 minutes | 60 minutes | 55 minutes |
| Depth | 330ft / 100m | 330ft / 100m | 330ft / 100m |
| Head Only Item | Item SL6712 | Item SL6780 | Item SL675 |
| Included Tray/Grip | Dual Tray, 2x Grips, Travel Case, GoPro® camera adapter | Dual Tray, 2x Grips, Travel Case, GoPro® camera adapter | Dual Tray, 2x Grips, 2x Flex-Arms, Travel Case, GoPro® camera adapter |

All lights feature a battery over-pressure safety release valve. The beam angles for the Sea Dragon lights are shown as the true, tested "in-air" (above water) beam angle. Due to light refraction, the angle tightens to approximately 33% less underwater (i.e. 120° = 90° underwater).

*COB = Chip on Board *CRI = Color Rendering Index

SeaLife's precision "wet lenses" offer a lens for every shot



Micro-Series & RM-4K Super Macro Lens
Item SL571 for Micro-series & RM-4K
The Super Macro Lens captures the intricate details of your photo and video subjects from 3.5" to 7" (9cm to 18cm). Features 2-element optical grade wet lens with anti-reflective coating and anodized aluminum construction with rubber press-on lens mount. Includes two removable focus distance sticks, safety lanyard and protective pouch.



DC-Series Super Macro Lens
Item SL976 for DC-series
Capture sharp details of tiny sea creatures from 1.5" to 4" (DC2000; 4cm to 10cm). Works with SeaLife DC-series cameras. Easy push-on mount with AR coated 2-element optical grade lens. Includes 52mm DC-series adapter for mounting 52mm lenses and filters to your DC-series camera.

Photo by Tobias Friedrich, DC2000 & DC-Series Super Macro Lens

SeaLife's Wide Angle lenses expand your underwater horizon



DC-Series 0.5x Wide Angle Dome Lens
Item SL050 for DC-series
The SeaLife 0.5x Wide Angle Dome Lens will increase the field of view by 100% over the 31mm lens of the DC2000 camera. The Dome Lens allows for amazing underwater images and offers incredible perspective of the undersea landscape. Includes 52mm DC-series adapter for mounting 52mm lenses and filters to your DC-series camera.



DC-Series 0.75x Wide Angle Conversion Lens
Item SL051 for DC-series
With the SeaLife 0.75x Wide Angle Conversion Lens, you can stay within the shooting range of your flash and still fit everything in the shot. The lens compensates for the water's magnification effect, increasing underwater shooting angle by 33%. Includes 52mm DC-series adapter.



DC-Series Lens Caddy
Item SL090 for DC-series
The SeaLife Lens Caddy mounts ANY SeaLife DC-Series lens to the camera tray using a standard 1/4-20 tripod screw or to any grip/arm up to 1.8" (45mm) in diameter using a sturdy hook & loop nylon strap. The Lens Caddy holds all SeaLife DC camera lenses.

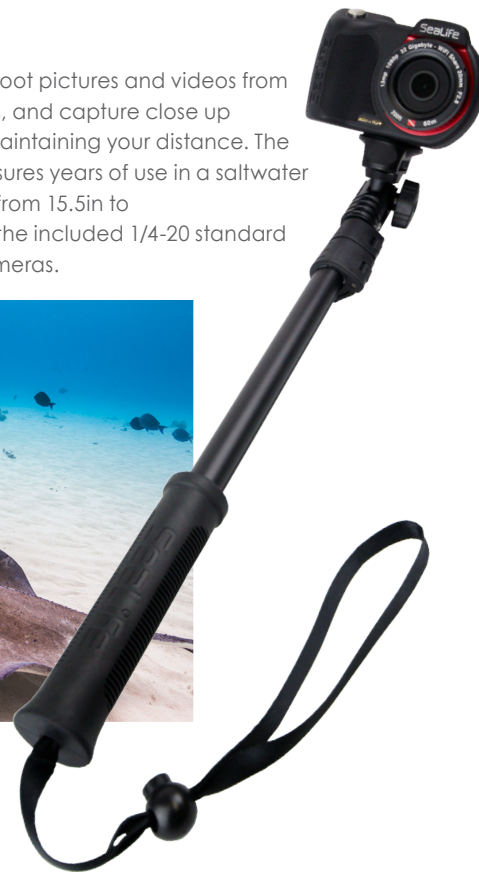
Photo by Tobias Friedrich, DC2000 & DC-Series 0.5x Wide Angle Dome Lens





AquaPod Mini Item SL912

The SeaLife AquaPod Mini allows you to shoot pictures and videos from creative viewing angles, take self-portraits, and capture close up photos and videos of your subject while maintaining your distance. The AquaPod Mini's corrosion-proof design assures years of use in a saltwater environment. The AquaPod Mini (extends from 15.5in to 38in / 39.3cm - 97cm) fits all cameras with the included 1/4-20 standard tripod mount and adapter for GoPro® cameras.



SeaLife Photo Pro Backpack Item SL940

The active diver requires more than just a gear bag for camera gear: You need a pack that travels well, is compact enough to fit into the overhead bin or under the seat in small island hopping commuter aircraft, and offer all the storage solutions for your photo gear. The SeaLife Photo Pro Backpack features a waterproof interior, to keep surrounding compartments dry and to keep moisture out.

The interchangeable, multi-compartment interior design fits photo gear up to a full sized camera and housing with several lights or strobes, such as the **DC2000 Pro Duo**, plus one or two lenses, batteries and all charging accessories. There's a separate compartment for a tablet or small notebook PC, and deep side pockets to accommodate a monopod or tripod.



The internal compartments create secure, cushioned homes for your camera equipment. Easily movable dividers allow you to create the perfect compartments to hold your gear.

SeaLife Soft Lined Neoprene Gear Pouch Item SL933

The SeaLife Protective Gear Pouch is a soft lined pouch that protects lenses, cameras, lights and other precision dive gear. The Gear pouch's soft velvet interior prevents scratches on sensitive optics and electronics. This pouch is especially recommended for lens storage in the photo backpack or your photo equipment case.



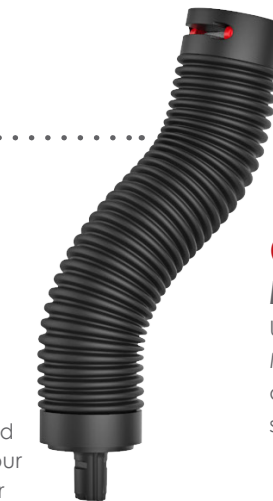
Flex Arm Item SL9901

Expand your camera set with one "click." Flex Arms feature 100° of bending motion, add 7 inches in length and allow you to direct light wherever you need it. Add up to two arms per side.



Grip Item SL9905P

The rubber-armored grip provides comfortable and improved handling for your light, flash, or underwater camera set. It "clicks" directly into any Flex-Connect Tray and accepts all Sea Dragon Light and Flash heads.



Cold Shoe Mount Item SL991

Use the Flex-Connect Cold Shoe Mount to mount a light, flash or action camera directly to the cold shoe of your camera.



Handle Item SL998

Use a powerful Sea Dragon Light as a handheld dive light by connecting it to the ergonomic Flex-Connect Handle. The base features stainless 1/4-20 threads to attach a D-ring for a lanyard, or mount a camera.



8"/20cm Rigid Ball Arm Item SL9909

Rigid, 8"/20cm anodized aluminum 1" ball arm. Fits to 1" ball clamps for a rigid mounting solution. Use with SL9907 clamp and SL995, SL999 ball joints.



Dual Tray Item SL9904

The compact Micro Tray is perfect for adding light and stability to your ultra-compact camera, while the Dual Tray expands your camera set with multiple lighting options. A sturdy stainless 1/4-20 mounting bolt holds your camera in place on the trays' rubber pad.

Single Tray Item SL9903P

Micro Tray Item SL9902



YS Adapter Item SL994

Connect any underwater light or flash that uses a YS Mount to Flex-Connect accessories including grips, trays, Flex Arms, and Cold Shoe Mount.



Quickly and easily expand your camera's capabilities with SeaLife's **Flex-Connect** system – add grips, flex arms, trays and other accessories with just a simple “click!”



Accessories & Essentials for your adventure.



1-Inch Ball Clamp
Item SL9907

Connects two 1-inch diameter ball mounts together. The plates are spring-loaded for easy assembly and breakdown. Its wing-nut handle features an attractive red anodized finish.



Ball Joint Adapters
Item SL995 Item SL999

Connect Sea Dragon lights and Flex-Connect accessories to any underwater camera using a standard 1"/25mm ball joint mounting system, or connect any light with a ball joint mount to Flex-Connect accessories.



Connects Sea Dragon Lights to any ball joint system (SL995)

Connects ball joint lights to Flex-Connect system (SL999)



Flex-Connect Sea Dragon Ball Joint Adapter connects Sea Dragon Lights to 1" ball joint system (SL995)

Ball Joint Adapter for Flex-Connect mounts ball joint lights to Flex-Connect system (SL999)



DC-Series 52mm Lens Mount

Item SL977 for DC series

The DC Series 52mm thread mount presses on the DC2000 and other DC Series housings. Photographers will now have a wide variety of lenses and filters to choose from.



50Wh Battery for Sea Dragon 4500F & 5000F Lights

Item SL67510

Rechargeable lithium ion battery (3400mAh, 7.4V 50Wh) for Sea Dragon 4500 & 5000 Lumen Lights.



DC-Series 52-67mm Step Up Ring

Item SL978 for DC series

Easily convert 52mm threads to 67mm threads! Attach any 67mm camera lens or filter to your SeaLife DC-series camera. Mounts to SL977 52mm thread mount adapter (SL977 sold separately).



DC2000 Spare Battery

Item SL7404

Rechargeable 3.7V 1130mAh 4.2Wh lithium ion battery for the DC2000 camera. Powers camera for 2+ hours of operation. Can be charged inside the camera through a USB cable and DC2000 wall charger.



Sea Dragon Red Fire Filter

Item SL9832

Aids in underwater navigation in darkness so to keep the eyes aware and dilated, this feature also prevents frightening nocturnal sea creatures. Presses on/off underwater and works with all Sea Dragon Lights with 1200 or more lumens (Not for imaging or Sea Dragon 4500/5000).



USB Charger for DC2000 Battery

Item SL7405

Charges SeaLife DC2000 Li-Ion battery. Features backlit LCD battery status indicator and works with any USB 5V wall charger or USB port. Includes USB Charger and USB Type Micro-B cable.



Universal Float Strap

Item SL920

Floats all SeaLife cameras as well as most other brands of waterproof cameras and other portable waterproof devices. Recommended for the negatively buoyant Micro HD, Micro HD+, Micro 2.0, and RM-4K cameras.



25Wh Battery for Sea Dragon 1200-3000 Lights

Item SL9831

Rechargeable lithium ion battery (3400mAh, 7.4V 25Wh) for Sea Dragon 1200, 1500, 2000, 2100, 2300, 2500, and 3000 Lumen and Fluoro Photo/Video/Dive Lights. Includes protective cap.



Screen Shield™ Screen Protector

Item SL5012 (2.4"), SL7402 (3")

Waterproof screen protector for the DC2000, Micro 2.0, and other compact cameras with a screen size of 3", 2.4" or smaller. The nano coating repels water and keeps the screen free of fingerprints while protecting against scratches.



18650 3500 mAh Lithium Ion Battery

Item SL9828

XTAR 18650 3.6V 3500mAh Li-Ion rechargeable battery (SL9826) for Sea Dragon Mini 1300S, 1000F, 900S, 650S/F, Fluoro and other brands adds approximately 30% additional burn time over 2600mAh 18650 cell.



Sea Dragon Custom EVA Case

Item SL942

Thermo-molded EVA case for your camera, light and other accessories. Protective, yet compact. Designed to hold your essential gear and easily fit into your luggage or carry-on bag.



18650 USB Mini Charger

Item SL9825

Charges 18650 3.6V 3500mAh and 3.7V 2600mAh 18650 Li-Ion batteries. Connects to all USB wall chargers (includes USB cable and storage pouch). Battery not included.

flex-connect® Kits Pre-Built Mounting Kits for turn-key convenience



Dual Tray Kit
Item SLKIT03

Complete with Flex-Connect Dual Tray, two Grips, two Flex Arms and two YS Adapters, this kit will help you get the most out of your underwater camera. Just add nearly any brand of camera and lights, and you're ready to head into the water. The tray uses a standard 1/4-20 tripod mount to fit most major brands of underwater cameras, and the YS adapter and Flex-Connect mounts attach to a wide array of underwater lighting brands.



Single Tray Kit
Item SLKIT02

This kit includes a Flex-Connect Single Tray, Grip, Flex Arm and YS Adapter. The tray uses a standard 1/4-20 tripod mount to fit most major brands of underwater cameras, and the YS adapter and Flex-Connect mounts attach to a wide array of underwater lighting brands.



15"/38cm Rigid Ball Arm Extension Kit
Item SLKIT11

When you want a rigid arm system to support heavier lights or in heavy currents This arm kit includes the new SL9909 Flex-Connect 8" (20cm) 1" Ball arm; one SL995 Sea Dragon Ball adapter; one SL999 Flex-Connect Ball adapter and two SL9907 1" Ball Clamps.



Photo: Tobias Friedrich, DC2000 & DC-Series 0.5x Wide Angle Dome Lens

Sealife®

Pioneer Research 97 Foster Road, Suite 5 Moorestown, NJ 08057 USA 856.866.9191 info@sealife-cameras.com
sealife-cameras.com  SealifeCameras  SealifeCameras

Product Features and Specifications may change without notice. © 2019 Pioneer Research, Item SL816